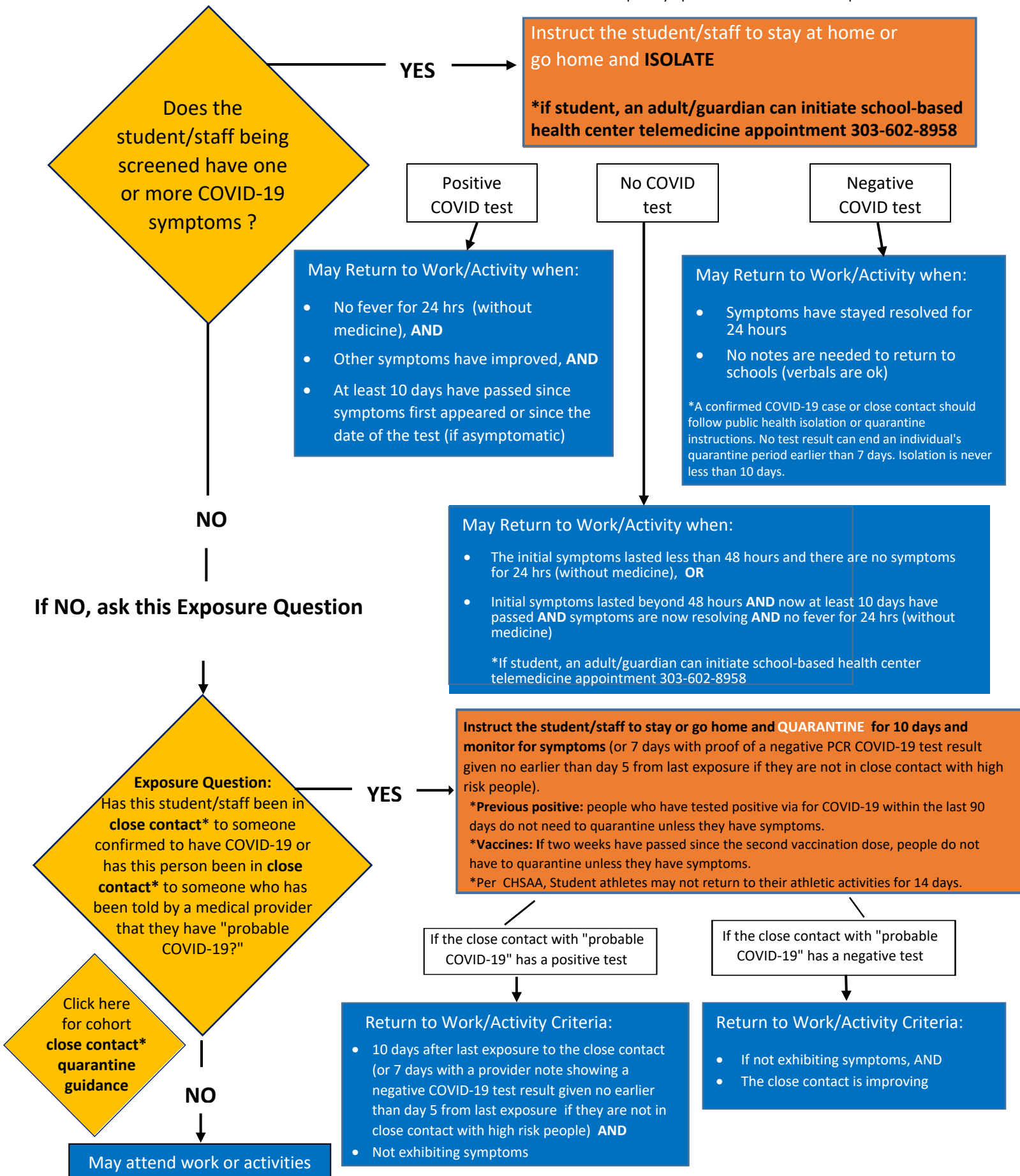


# COVID-19 Screening and COVID-19 Testing Decision Tree

03.02.2021 (updated quarantine section related to sports)

\*This document is frequently updated and should not be printed



\*Definition of a close contact: is someone who was within 6 feet of an infected person for a cumulative total of 15 minutes or more over a 24-hour period\* starting from 2 days/48 hours before illness onset (or, for asymptomatic patients, 2 days/48 hours prior to the date of the COVID-19 test ) until the time the patient is isolated.